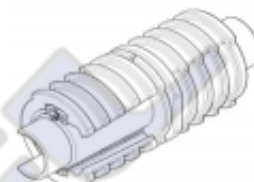




Technical datasheet for:

**EBM**



**General data**

<b>Item</b>	Divisible connector
<b>Description</b>	The tensile and divisible connector EBM ensures the permanent gas- and water-tight connection of occupied speedpipe up to 0.5 bar and for a duration of 30 minutes even up to 10 bar. Installation is carried out without any special tools.
<b>Package unit</b>	12 Pcs.

**Technical data**

Quality	Value	Unit
<b>Material</b>	PolyPhenylenOxid PPO	
<b>Dimension</b>	EBM 7: d = 27; L = 88	mm
	EBM 10: d = 28; L = 88	
	EBM 12: d = 30; L = 88	
	EBM 14: d = 33; L = 88	
	EBM 16: d = 36; L = 92	
<b>Pressure</b>	0.5 (permanent gas- and watertight)	bar
	10 / 30	bar / min
<b>Tensile strength</b>	EBM 7: min. 70	N
	EBM 10: min. 100	
	EBM 12: min. 120	
	EBM 14: min. 140	
	EBM 16: min. 160	
<b>Loading capacity of connecting clamps</b>	min. 750	N
<b>Fire behavior of case half and clamp (DIN EN 13501-1)</b>	E - d2	